



MEASUREMENTS

Approximately 44cm tall.

MATERIALS

8-ply acrylic yarn (50g):

- Two balls yellow
- Small amounts blue and white
- Small amounts dark brown and black, for embroidery
- One pair 4mm (No 8) knitting needles
- Knitter's needle, for sewing seams and embroidery
- Polyester filling
- Ribbon

KNITTING

Note: Before beginning, it is important to read the *Basic Instructions* on page 5.



Approximately 24 rows



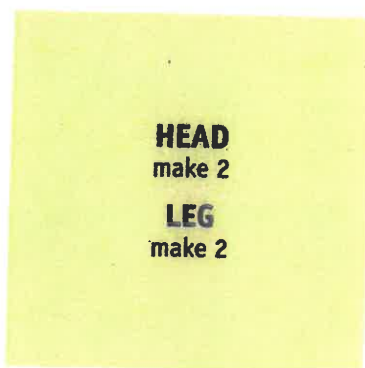
MUZZLE
make 1

28 stitches

Using yellow, cast on 28 sts.
Knit 24 rows, cast off.

TO MAKE UP

Approximately 48 rows



HEAD
make 2

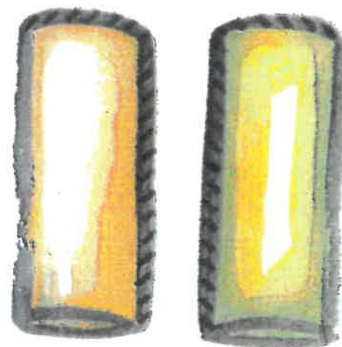
LEG
make 2

28 stitches

Using yellow, cast on 28 sts.
Knit 48 rows, cast off.



1 Matching stripes, join Body squares together along three sides, leaving neck and shoulder edge open.



3 Fold each Leg in half, and join along cast-on edge and long side.

Approximately 48 rows

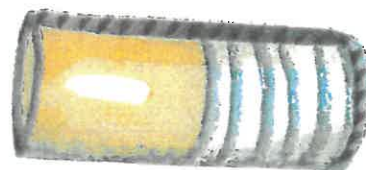


BODY
make 2

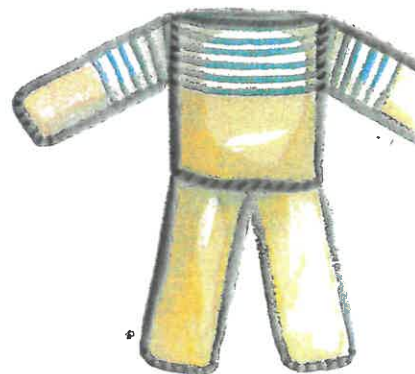
ARM
make 2

28 stitches

Using blue, cast on 28 sts. Knit 22 rows in stripes of 2 rows blue and 2 rows white, ending with a blue row. Change to yellow, knit 26 rows, cast off.



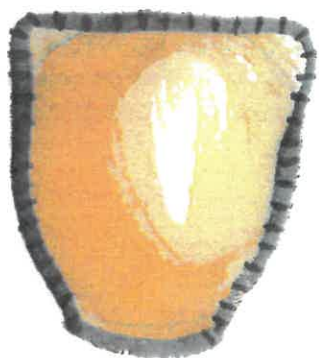
2 Fold each Arm in half, matching stripes, and join along cast-on edge and long side.



4 Join closed ends of Arms and Legs to Body. Stuff Arms and Legs with polyester filling and sew open ends closed, rounding corners. Stuff Body.



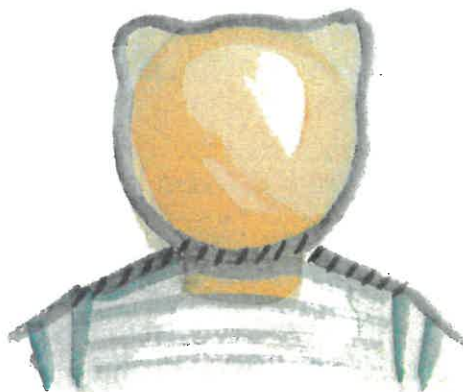
5 Pin Head squares together, rounding top corners and shaping neck.



6 Sew around edge, leaving neck edge open for stuffing.



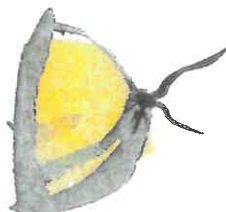
7 Sew diagonally across top corners of Head to form ears. Run a gathering thread around neck edge and top of neck. Stuff Head, pull up neck gathering to approximately 19cm, and stuff neck.



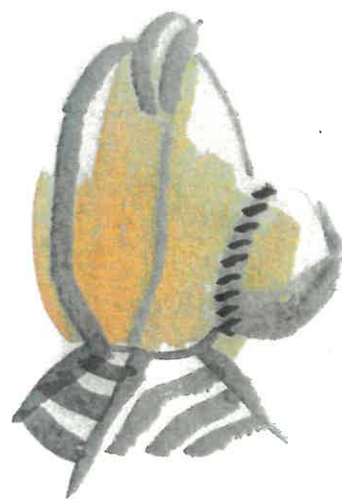
8 Insert neck in centre of Body opening, pin then sew neck to neck edge of Body, if necessary, and sew shoulder seams.



9 Fold Muzzle in half widthwise, sew lower seam and run a gathering thread around one open end.



10 Pull up gathering tightly and tie off. Stuff Muzzle firmly.



11 Position Muzzle on lower half of face and sew in place.



12 Using dark brown, work eyes in satin stitch and mouth in stem stitch. Using black, work nose in satin stitch. Tie a ribbon around Teddy's neck to finish.

